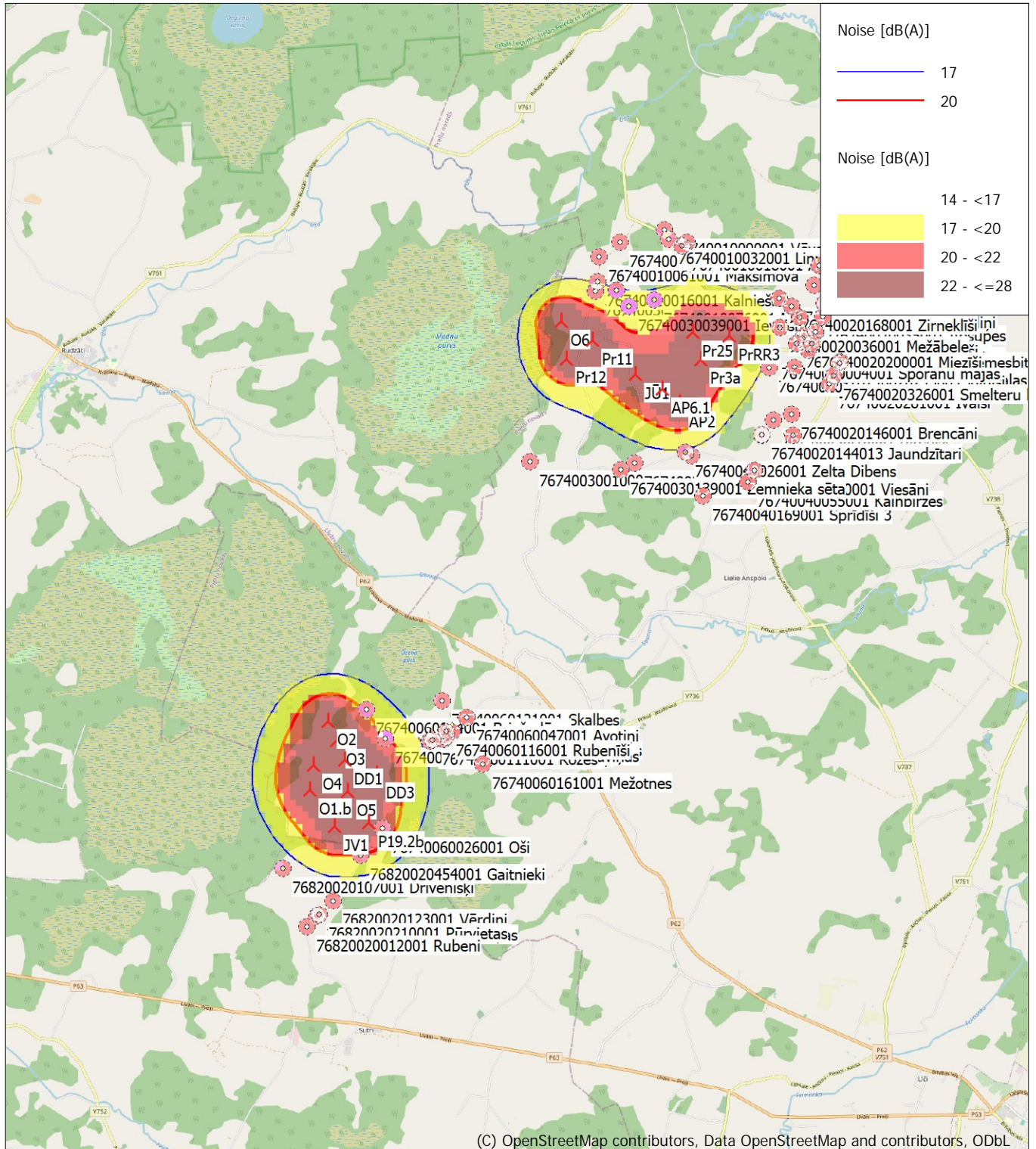


## DECIBEL - Map 6.0 m/s Regular dwellings

Calculation: Nordex N175-6.8 MW STE A alternative



0 1 2 3 4 km

Map: EMD OpenStreetMap, Print scale 1:100,000, Map center Geo WGS84 East: 26.578066° E North: 56.383993° N  
New WTG Noise sensitive area  
Noise calculation model: Danish low frequency 2019. Wind speed: 6.0 m/s Regular dwellings  
Height above sea level from active line object



## DECIBEL - Map 8.0 m/s Regular dwellings

Calculation: Nordex N175-6.8 MW STE A alternative

